

# Corporate Data

As of July 2011

## Founded

November 1911

## Date of Incorporation

October 1919

## Paid-in Capital

¥5,174 million

## Issued and Outstanding Number of Shares

70,251,484

## Number of Shareholders

5,338

## Independent and Certified Public Accountants

Deloitte Touche Tohmatsu

Shijokarasuma FT Square

20, Naginataboko-cho, Karasuma-higashiiru, Shijo-dori

Shimogyo-ku, Kyoto 600-8008, Japan

## Share Register

Mitsubishi UFJ Trust and Banking Corporation

6-3, Fushimimachi 3-chome, Chuo-ku,

Osaka 541-0044, Japan

## Major Shareholders

Meiji Yasuda Life Insurance Company

Japan Trustee Services Bank, Ltd

The Bank of Tokyo-Mitsubishi UFJ, Ltd.

The Bank of Kyoto, Ltd.

PERSHING-DIV. OF DLJ SECS. CORP.

Nippon Life Insurance Company

The Master Trust Bank of Japan, Ltd.

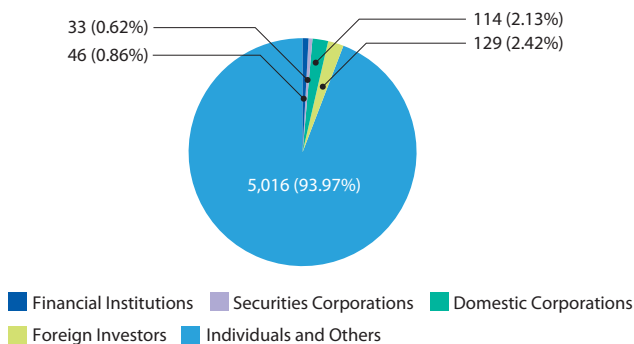
Tokio Marine & Nichido Fire Insurance Co., Ltd.

Mitsubishi Corporation

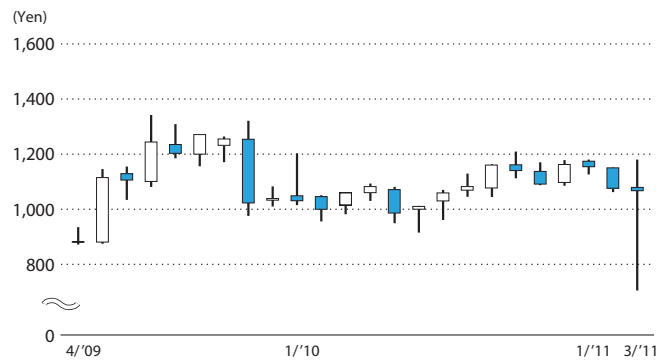
Nippon Shinyaku Employees' Stockholding

## Investor Information

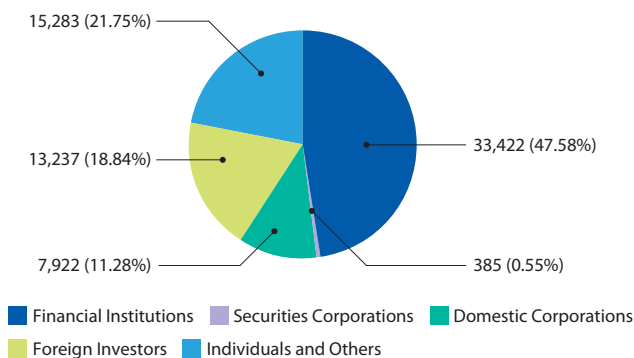
### Distribution of Shareholders



### Stock Price



### Distribution of Shares Issued (Thousands of shares)



### Trading Volumes

